



APC & RPC Package Units

APC Type nominal capacity: 4 – 100 R.Ton
RPC Type nominal capacity: 15 – 100 R.Ton

MODEL KEYWORD

RPC 1 1 S A 20 O 6 W

Product series:

RPC: Remote Air-cooled package unit
APC: Air-cooled package unit
WPC: Water-cooled package unit

Product Version

Number of Compressors:
1 or 2

Compressor type:

S: Reciprocating Semi hermetic
E: Compact Semi hermetic Screw
H: Reciprocating hermetic
F: Scroll hermetic

Compressor brand:

A: Carrier(Carlyle)
B: BITZER
O: Copeland or DWM Copeland
M: Maneurop

Nominal capacity:

(4-100 R.Ton ~ 13-350 KW)

Packing specifications:

D: Domestic packing
I: International packing
W: Without packing

Electrical power specifications:

(V-Ph-Hz)	(V-Ph-Hz)
1 :575-3-60	5 :200-1-60
2 :460-3-60	6 :400-3-50
3 :230-3-60	7 :220-1-50
4 :200-3-60	

Design improvements:

O: Original (without additional options)
M: With Microprocessor controller

* Electrical heaters, Hot water heating coil or steam heating coil, electrical humidifier, water spray nozzle and ultra sonic humidifier are available upon request.

** The heating capacity should be mention separately.

***The humidifier capacity should be mentioned separately.



APC



RPC

GENERAL INFORMATION :

TECHNO ACTORS air conditioners, with remote air cooled package units (RPC) and air cooled package units (APC) are designed and manufactured to be used In wide range of commercial and industrial applications, mainly in office buildings , hospitals, hotels , apartments and etc.

RPC: Remote air cooled package units are designed in 2 versions:

Version 1: RPC1, horizontal models in 31 ranges of capacity with nominal capacity of 20-100 R-ton (70-350 kw).

Version 2: RPC2, vertical models in 8 ranges of capacity with nominal capacity of 15-40 R-ton (53-140kw).

APC: Air cooled package units designed in 2 versions:

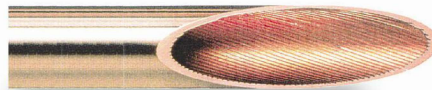
Version 1: APC1 models in 31 ranges of capacity with nominal capacity of 20-100 Rton (70-350 kw).

Version 2: APC2 models in 9 ranges of capacity with nominal capacity of 4-20 R.ton (14-70kw).

Unit's body and frames are made of galvanized steel sheets and coated with Electro static spray paint and cooked in 200 – 250 °C.

EVAPORATOR :

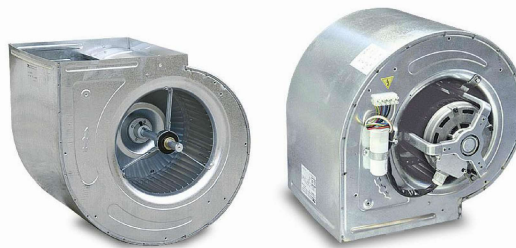
Copper tube - aluminum fins (or copper tube- copper fins by request) evaporator coils are manufactured with high heat transfer by expanding tubes to fins. The evaporator coils are tested under 20 bar pressure.(Inner groved copper tubes are also available by request.)



EVAPORATOR FAN :

TECHNO ACTORS uses centrifugal, double suction type evaporator fans with forward curved blades with belt driven or motor driven for small models.

Back ward curved fans are also available by request.



REFRIGERATION CIRCUIT COMPONENTS :

The following components used on the liquid refrigerant line:

Shut-off valve, removable type filter dryer, thermostatic valve expansion mounted before evaporator coil and service valves.

COMPRESSOR:

The compressors used with our units are provided from world's famous producers such as Carrier (8 - 40 R-ton), Maneurop (5 - 10 R-ton) reciprocating type, Copeland (5 - 10 R-ton in two type of hermetic and scroll), Bitzer (4 - 50 R-ton in two types of semi-hermetic and screw).

The advantage of screw and scroll compressors are lower noise & vibration, higher efficiency and longer working hours than reciprocating compressors.

For more information please contact our engineering Dep.



CONTROL PANEL :

Control panels are designed with the most recent product by Telemecanique, Simens, Alco, and any available trade mark by request. TECHNO ACTORS offers two kinds of mechanical and microprocessor control circuits for its products.

a- Mechanical control panel:

This type of panel includes circuit breaker, contactors for compressors, evaporator fan and condenser fans. They also include pressure controls for high, low and oil pressures, pressure gages, warning lights and on/off switches.

b- Microprocessor control panel:

This type of panel is equipped with the latest microprocessor control system technology and instruments. In such a system all the pressures and temperature sensors are processed by the main board, all the faults are processed with this board and the whole system is controlled by this main board.

The LCD display on the controller lets the user to observe various variables and enables them to control and change necessary parameters.

APC1 and RPC1 models physical data

Model	*PC1**20	*PC1**25	*PC1**30	*PC1**40	*PC1**50	*PC1**60	*PC1**70	*PC1**80	*PC1**100
INDOOR FAN (Evaporator)									
Fan model (NICOTRA)	AT 18" x 18"	AT 18" x 18"	AT 22" x 22"	AT 18" x 18"	AT 18" x 18"	AT 22" x 22"	AT 22" x 22"	AT 28" x 28"	AT 28" x 28"
Number of fan	1	1	1	2	2	2	2	2	2
Nominal cfm	8000	10000	12000	2 x 8000	2 x 10000	2 x 12000	2 x 14000	2 x 16000	2 x 20000
Range cfm	5000-12500	5000-13000	7400-13000	9500-25000	11300-37000	15000-37000	15000-37000	24000-40000	20000-48000
Fan speed (rpm)	738	763	700	738	770	720	750	500	550
Motor power (kW)	5.5	5.5	11	2 x 5.5	2 x 5.5	2 x 11	2 x 11	2 x 18.5	2 x 18.5
INDOOR COIL (Evaporator)*									
No. of rows / Fin per meter	6 / 472	4 / 472	6 / 472	6 / 472	4 / 394	6 / 394	6 / 472	6 / 472	6 / 551
Total face area (M ²)	1.45	1.725	1.725	2.93	4.4	4.4	4.4	5.5	5.5
FILTER AND DAMPERS									
Filter face area (M ²)	1.9	2.25	2.25	3.375	5	5	5	6.75	6.75
Fresh air face area (M ²)	0.118	0.272	0.272	0.39	0.39	0.382	0.382	0.573	0.573
Return air face area (M ²)	0.354	0.408	0.408	0.995	0.995	0.995	0.995	1.34	1.34
For APC series**									
OUTDOOR COIL (Condenser)									
Num. of rows / Fin per meter	4 / 472	3 / 394	4 / 394	4 / 551	3 / 394	4 / 394	4 / 551	3 / 394	4 / 551
Num. Of fan / fan diameter	2 / 710	3 / 710	3 / 710	4 / 710	6 / 710	6 / 710	6 / 710	3 / 1000	3 / 1000
Total face area (M ²)	2.4	3.8	3.8	4.12	6.75	6.75	6.75	14.6	14.6

* Hot water coil , steam coil , electrical heater and humidifier upon request.

** For RPC series you can select a wide range of suitable air cooled condenser with referring to TECHNO ACTORS AIR COOLED CONDENSER CATALOGUE.

APC2 models Physical data

Model	APC21**4	APC21**5	APC21**6	APC21**7	APC21**8	APC21**10	APC21**12	APC21**15	APC21**20
INDOOR FAN (Evaporator)*									
Fan model	AT 10" x 10"	AT 10" x 10"	AT 12" x 12"	AT 12" x 12"	AT 15" x 15"	AT 15" x 15"	AT 15" x 15"	AT 15" x 15"	AT 15" x 15"
Number of fan	1	1	1	1	1	1	1	1	1
Nominal cfm	1600	2000	2400	2800	3000	4000	4800	6000	8000
Range cfm	1200-2000	1500-2500	2000-3000	2300-3300	2300-3700	3000-5000	3500-6000	5000-7000	6000-10000
Fan speed (rpm)	800	900	900	950	720	750	770	800	900
Motor power (Kw)	0.55	0.75	0.75	1.5	2.2	2.2	3	4	5.5
INDOOR COIL (Evaporator)**									
No. of rows / Fin per meter	4 / 473	4 / 473	4 / 473	4 / 473	4 / 473	6 / 473	6 / 473	6 / 473	8 / 551
Total face area (m ²)	0.3	0.37	0.45	0.52	0.6	0.63	0.75	0.94	1.2
OUTDOOR COIL (Condenser)									
Num. of rows / Fin per meter	4 / 551	4 / 551	3 / 551	3 / 551	3 / 551	4 / 551	3 / 551	3 / 551	4 / 551
Num. Of fan / fan diameter	1 / 500	1 / 630	2 / 500	1 / 710	1 / 710	1 / 710	2 / 630	2 / 710	2 / 710
Total face area (M ²)	0.67	0.84	1.1	1.2	1.39	1.39	2.1	3.2	3.2

* Motor driven fan could be mounted for this models upon request.

** Hot water coil, steam coil, electrical heater and humidifier upon request.

RPC 2 models physical data

Model	RPC21**15	RPC22**20	RPC22**25	RPC22**30	RPC2**40
INDOOR FAN (Evaporator)*					
Fan model	AT 15" x15"	AT 12" x 12"	AT 15" x15"	AT 15" x 15"	AT 15" x 15"
Number of fan	1	2	2	2	2
Nominal cfm	6000	2 x 4000	2 x 5000	2 x 6000	2 x 8000
Range cfm	4000-11000	5800-15000	7200-19000	7200-19000	7500-20000
Fan speed (rpm)	700	910	727	753	810
Motor power (Kw)	3	2 x 2.2	2 x 3	2 x 3	2 x 4
INDOOR COIL (Evaporator)**					
No. of rows / Fin per meter	4 / 394	4 / 394	4 / 394	4 / 394	6 / 473
Total face area (m ²)	1.3	1.81	2.2	2.24	2.24
REFRIGERANT CONNECTION					
System 1 :Hot gas-Liquid	1 1/8"-7/8"	7/8"-5/8"	1 1/8"-5/8"	1 1/8"-7/8"	1 1/8"-7/8"
System 2 :Hot gas-Liquid	----	7/8"-5/8"	7/8"-5/8"	1 1/8"-7/8"	1 1/8"-7/8"

* Motor driven fan could be mounted for this models upon request.

** Hot water coil, steam coil, electrical heater and humidifier upon request.

Cooling capacity

MODEL	COND TEMP	COOLING CAPACITY			IN.P (KW)		Compressor model
		KW(R22)	R.T (R22)	KW(R407C)	R22	407C	
APC21SB4 ★★★	40	17.38	4.94	16.76	3.69	3.53	2CC-4.2
	45	16.23	4.62	15.44	4.12	3.92	
	50	15.10	4.29	14.13	4.51	4.28	
	55	13.93	3.96	12.83	4.87	4.62	
	60	12.82	3.65	11.53	5.20	4.97	
APC21FO5 ★	40	17.8	5.06	16.9	3.89	3.69	ZR 72KC-TFD
	45	16.9	4.81	15.8	4.34	4.15	
	50	16	4.55	14.8	4.78	4.66	
	55	14.9	4.24	13.7	5.22	5.23	
APC21HO5 ★	40	16.4	4.7	-	4.3	-	CRNQ-0500-TFD
	45	15.2	4.3	-	4.6	-	
	50	14.1	4	-	4.8	-	
	55	12.9	3.7	-	5.1	-	
APC21HM5 ★★★★	40	17.88	5.09	17.06	4.1	4.39	MT Z 65 - 4 or MT 65 - 4
	45	16.68	4.74	15.72	4.45	4.62	
	50	15.47	4.4	14.37	4.8	4.84	
	55	14.28	4.06	12.99	5.12	5.08	
	60	13.09	3.72	11.61	5.43	5.31	
APC21SB6 ★★★	40	24.4	6.94	23.8	5.03	4.86	4EC-6.2
	45	22.9	6.51	21.9	5.64	5.4	
	50	21.3	6.06	20.1	6.22	5.95	
	55	19.8	5.63	18.9	6.76	6.52	
APC21SB7 ★★★	40	18.2	5.18	16.34	7.26	7.13	4DC-7.2
	40	28.90	8.22	29.00	5.86	5.76	
	45	27.90	7.94	26.80	6.54	6.39	
	50	26.10	7.42	24.60	7.19	7.03	
	55	24.20	6.88	22.40	7.82	7.70	
APC21FO8 ★	60	22.40	6.37	20.30	8.44	8.40	ZR 90-K3-TWD
	40	25.80	7.33	24.96	5.92	5.78	
	45	24.54	6.98	23.40	6.58	6.47	
	50	23.28	6.62	21.84	7.25	7.24	
	55	21.96	6.24	20.28	7.78	8.09	
APC21HO8 ★	60	20.64	5.87	18.72	8.30	9.00	QR 90 K1-TFD
	40	25.2	7.2	-	6.6	-	
	45	23	6.5	-	6.9	-	
	50	20.9	5.9	-	7.2	-	
	55	18.6	5.3	-	7.5	-	
APC21HM8 ★★★★	60	16.4	4.7	-	7.7	-	MT Z 100 - 4 or MT Z 100 - 4
	40	26.64	7.58	26.11	6.51	6.39	
	45	24.76	7.04	23.99	6.96	6.82	
	50	22.87	6.5	21.87	7.4	7.25	
	55	21.1	6	19.67	7.88	7.66	
APC21SA8 ★★	60	19.33	5.5	17.47	8.36	8.06	06DA818
	40	27.20	7.74	-	5.00	-	
	45	25.47	7.24	-	5.60	-	
	50	23.75	6.75	-	6.10	-	
	55	22.02	6.26	-	6.60	-	
60	20.30	5.77	-	7.10	-		

★ Copleland ★★ Carrier ★★★ Bitzer ★★★★ Maneurope

IN.P: Compressor input power

*Data for R1034A is also available by request.

Cooling capacity

MODEL	COND TEMP		COOLING CAPACITY		IN.P (KW)	R22	407C	Compressor model
	R22	407C	R22	407C				
*PC*1SB20 ***	40	63.50	18.06	61.70	12.61	12.13	4N-20.2	
	45	60.10	17.09	57.75	14.02	13.49		
	50	56.70	16.13	53.80	15.43	14.84		
	55	53.35	15.17	50.15	16.80	16.02		
	60	50.00	14.22	46.50	18.16	17.20		
	60	103.50	29.44	-	-	19.80		-
*PC*1SA25 **	45	96.35	27.40	-	21.75	-	06EA265	
	50	89.20	25.37	-	23.70	-		
	55	82.35	23.42	-	25.35	-		
*PC*1SB25 ***	40	75.50	21.47	-	27.00	-	4H-25.2	
	40	82.30	23.41	78.60	16.57	16.47		
	45	78.00	22.18	73.25	17.82	18.03		
	50	73.70	20.96	67.90	19.07	19.58		
	55	69.50	19.77	63.20	20.84	21.34		
	60	65.30	18.57	58.50	22.60	23.10		
*PC*2SA25 **	40	94.50	26.88	-	17.50	-	06DA537 + 06DA824	
	45	88.30	25.11	-	19.45	-		
	50	82.10	23.35	-	21.40	-		
*PC*1SA30 **	55	76.10	21.64	-	23.15	-	06EA275	
	60	70.10	19.94	-	24.90	-		
	40	109.8	31.2	-	22.40	-		
	45	103.3	29.4	-	24.50	-		
	50	96.8	27.5	-	26.60	-		
	55	90.2	25.7	-	28.40	-		
*PC*2SB30 ***	60	83.6	23.8	-	30.20	-	2 x 4P-15.2	
	40	105.20	29.92	102.20	20.94	20.62		
	45	99.80	28.38	95.80	23.63	23.13		
	50	94.40	26.85	89.40	26.32	25.64		
	55	88.70	25.23	82.00	28.51	26.43		
	60	83.00	23.61	74.60	30.70	27.2		
*PC*1SB30 ***	40	94.40	26.85	90.00	19.44	19.47	4G-30.2	
	45	89.45	25.44	83.65	21.12	21.14		
	50	84.50	24.03	77.30	22.80	22.80		
	55	79.70	22.67	72.40	25.05	25.15		
	60	74.90	21.30	67.50	27.30	27.50		
	40	116.4	33.1	-	22.00	-		
*PC*2SA30 **	45	109.1	31.02	-	24.60	-	2 x 06DA537	
	50	101.8	28.96	-	27.20	-		
	55	94.7	26.94	-	29.50	-		
*PC*1SA40 **	60	87.6	24.92	-	31.80	-	06EA299	
	40	144.1	41.0	-	32.20	-		
	45	135.6	38.6	-	34.80	-		
	50	127.1	36.1	-	37.40	-		
	55	118.8	33.8	-	39.60	-		
	60	110.5	31.4	-	41.70	-		
*PC*2SA40 **	40	154.8	44.02	-	29.60	-	2 x 06EA250	
	45	144.6	41.12	-	32.40	-		
	50	134.4	38.22	-	35.20	-		
	55	124.2	35.32	-	37.90	-		
	60	114	32.42	-	40.60	-		
	60	114	32.42	-	40.60	-		

★ Copleland ★★ Carrier ★★★ Bitzer ★★★★ Maneurope
IN.P: Compressor input power
*Data for R1034A is also available by request.

Cooling capacity

MODEL	COND TEMP		COOLING CAPACITY		IN.P (KW)	R22	407C	Compressor model
	R22	407C	R22	407C				
APC21FO10 ★	40	30.7	8.73	29.7	3.69	6.78	ZR 12M3-TWD	
	45	29.2	8.29	27.8	4.12	7.61		
	50	27.6	7.85	26.1	4.51	8.53		
	55	26.5	7.54	24.2	4.87	9.54		
	60	25.4	7.22	22.4	5.20	10.65		
	40	32.3	9.2	-	9.00	-		
APC21HO10 ★	45	29.5	8.4	-	9.50	-	QR 12 M1-TFD	
	50	26.6	7.6	-	9.80	-		
	55	23.8	6.8	-	10.20	-		
APC21HM10 ***	60	20.8	5.9	-	10.60	-	MT Z 125 - 4 or MT 125 - 4	
	40	34.57	9.83	34.2	8.62	8.2		
	45	32.23	9.17	31.55	9.26	8.77		
	50	29.88	8.5	28.9	9.89	9.33		
	55	27.48	7.81	26.15	10.46	9.89		
	60	25.07	7.13	23.39	11.03	10.44		
APC21SA10 **	40	36.30	10.33	-	6.50	-	06DA824	
	45	33.75	9.60	-	7.15	-		
	50	31.20	8.87	-	7.80	-		
APC21SB10 ***	55	28.75	8.17	-	8.40	-	4V-10.2	
	60	26.30	7.48	-	9.00	-		
	40	37.30	10.61	36.10	6.94	6.70		
	45	35.30	10.04	33.80	7.88	7.53		
	50	33.20	9.44	31.40	8.83	8.44		
	55	31.20	8.87	29.10	9.74	9.42		
APC21SB12 ***	60	29.10	8.28	26.60	10.60	10.46	4T-12.2	
	40	45.00	12.80	43.60	8.33	8.20		
	45	42.60	12.12	40.80	9.55	9.22		
	50	40.10	11.41	38.00	10.77	10.30		
	55	37.60	10.69	35.20	11.89	11.44		
	60	35.20	10.01	32.30	12.81	12.64		
APC*1SA15 **	40	58	16.50	-	11.00	-	06DA537	
	45	54.4	15.47	-	12.40	-		
	50	50.8	14.45	-	13.60	-		
	55	47.3	13.45	-	14.80	-		
	60	43.8	12.46	-	15.90	-		
	40	52.5	14.93	50.7	10.47	10.31		
APC*1SB15 ***	45	49.7	14.14	47.5	11.84	11.57	4P-15.2	
	50	46.9	13.34	44.3	13.16	12.82		
	55	44.1	12.54	41.0	14.36	14.08		
	60	41.2	11.72	37.7	15.35	15.37		
	40	72.6	20.66	-	13.00	-		
	45	67.5	19.2	-	14.30	-		
RPC22SA20 **	50	62.4	17.74	-	15.60	-	2 x 06DA824	
	55	57.5	16.34	-	16.80	-		
	60	52.6	14.96	-	18.00	-		
*PC*1SA20 **	40	77.40	22.01	-	14.80	-	06EA250	
	45	72.30	20.56	-	16.20	-		
	50	67.20	19.11	-	17.60	-		
	55	62.10	17.66	-	18.95	-		
	60	57.00	16.21	-	20.30	-		
	60	57.00	16.21	-	20.30	-		

★ Copleland ★★ Carrier ★★★ Bitzer ★★★★ Maneurope
IN.P: Compressor input power
*Data for R1034A is also available by request.

Cooling capacity

MODEL	COND TEMP	COOLING CAPACITY	IN.P (KW)	Compressor model			
	KW(R22)	R.T (R22) KW(R407C)	R22 407C				
*PC*1SB40 ★★★	40	141.70	40.30	135.10	29.20	29.00	6G-40.2
	45	135.25	38.47	125.50	31.70	31.50	
	50	128.80	36.63	115.90	34.20	34.00	
	55	120.60	34.30	108.15	37.60	37.35	
	60	112.40	31.97	100.40	41.00	40.70	
	40	127.00	36.12	123.40	25.22	24.20	
45	120.20	34.19	115.50	28.04	26.90		
50	113.40	32.25	107.60	30.86	29.60		
55	106.70	30.35	100.30	33.59	32.00		
60	100.00	28.44	93.00	36.32	34.40		
40	207	58.88	-	39.6	-	2 x 06EA265	
45	192.7	54.8	-	43.5	-		
50	178.4	50.74	-	47.4	-		
55	164.7	46.84	-	50.7	-		
60	151	42.94	-	54	-		
40	167.20	47.55	160.50	36.80	35.20		6F-50.2
45	158.80	45.16	150.15	39.45	38.35		
50	150.40	42.78	139.80	42.10	41.50		
55	141.75	40.32	128.95	45.20	42.15		
60	133.10	37.86	118.10	48.30	42.80		
40	164.60	46.81	157.20	33.14	32.94	2 x 4H-25.2	
45	156.00	44.37	146.50	35.64	36.05		
50	147.40	41.92	135.80	38.14	39.16		
55	139.00	39.53	126.40	41.67	42.68		
60	130.60	37.14	117.00	45.20	46.20		
40	152.80	43.46	149.60	33.30	32.00		CSH6551-50
45	143.40	40.78	139.15	36.30	35.10		
50	134.00	38.11	128.70	39.30	38.20		
55	123.70	35.18	116.85	43.00	42.25		
60	113.40	32.25	105.00	46.70	46.30		
40	219.6	62.5	-	44.8	-	2 x 06EA275	
45	206.6	58.8	-	49.0	-		
50	193.6	55.1	-	53.2	-		
55	180.4	51.3	-	56.8	-		
60	167.2	47.6	-	60.4	-		
40	188.80	53.70	180.00	38.88	38.94		2 x 4G-30.2
45	178.90	50.88	167.30	42.24	42.27		
50	169.00	48.07	154.60	45.60	45.60		
55	159.40	45.34	144.80	50.10	50.30		
60	149.80	42.61	135.00	54.60	55.00		
40	205.70	58.50	201.80	42.80	42.80	8GC - 60.2	
45	194.25	55.25	188.30	46.85	46.75		
50	182.80	51.99	174.80	50.90	50.70		
55	171.15	48.68	163.55	55.55	55.25		
60	159.50	45.36	152.30	60.20	59.80		
40	190.00	54.04	184.50	39.90	39.30		CSH6551-60
45	179.35	51.01	171.90	43.90	43.15		
50	168.70	47.98	159.30	47.90	47.00		
55	156.55	44.53	145.70	52.95	52.50		
60	144.40	41.07	132.10	58.00	58.00		

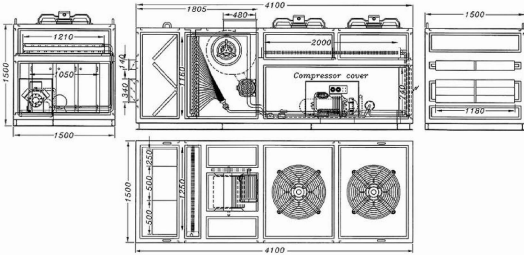
★ Copleland ★★ Carrier ★★★ Bitzer ★★★★ Maneurope
IN.P: Compressor input power
*Data for R1034A is also available by request.

Cooling capacity

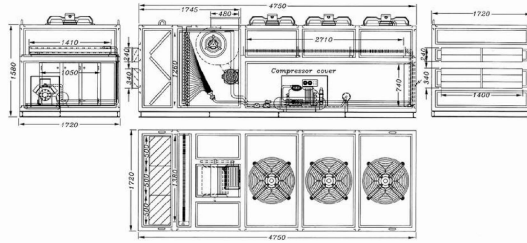
MODEL	COND TEMP	COOLING CAPACITY	IN.P (KW)	Compressor model		
	KW(R22)	R.T (R22) KW(R407C)	R22 407C			
*PC*2SA70 ★★	40	253.9	72.2	54.6	-	06EA275 + 06EA299
	45	238.9	67.9	59.3	-	
	50	223.9	63.7	64.0	-	
	55	209.0	59.4	68.0	-	
	60	194.1	55.2	71.9	-	
	40	236.10	67.15	225.10	48.64	
45	224.70	63.91	209.15	52.82	52.64	
50	213.30	60.67	193.20	57.00	56.80	
55	200.30	56.97	180.55	62.65	62.50	
60	187.30	53.27	167.90	68.30	68.20	
40	238.40	67.80	238.80	53.50	52.20	8FC-70.2
45	224.95	63.98	222.80	58.45	57.00	
50	211.50	60.15	206.80	63.40	61.80	
55	197.45	56.16	190.65	68.30	66.95	
60	183.40	52.16	174.50	73.20	72.10	
40	227.00	64.56	224.00	46.70	45.30	
45	211.80	60.24	208.70	50.85	49.35	
50	196.60	55.92	193.40	55.00	53.40	
55	179.65	51.09	175.50	60.30	59.25	
60	162.70	46.27	157.60	65.60	65.10	
40	288.2	82.0	-	64.4	-	2 x 06EA299
45	271.2	77.1	-	69.6	-	
50	254.2	72.3	-	74.8	-	
55	237.6	67.6	-	79.1	-	
60	221.0	62.9	-	83.4	-	
40	283.40	80.60	270.20	58.40	58.00	
45	270.50	76.93	251.00	63.40	63.00	
50	257.60	73.27	231.80	68.40	68.00	
55	241.20	68.60	216.30	75.20	74.70	
60	224.80	63.94	200.80	82.00	81.40	
40	259.00	73.66	254.00	55.20	53.00	CSH7560-80
45	243.00	69.11	236.00	60.15	58.10	
50	227.00	64.56	218.00	65.10	63.20	
55	209.85	59.68	198.25	71.25	69.95	
60	192.70	54.81	178.50	77.40	76.70	
40	334.40	95.11	321.00	73.60	70.40	
45	317.60	90.33	300.30	78.90	76.70	
50	300.80	85.55	279.60	84.20	83.00	
55	283.50	80.63	257.90	90.40	84.30	
60	266.20	75.71	236.20	96.60	85.60	
40	305.60	86.92	299.20	66.60	64.00	2 x CSH6551-50
45	286.80	81.57	278.30	72.60	70.20	
50	268.00	76.22	257.40	78.60	76.40	
55	247.40	70.36	233.70	86.00	84.50	
60	226.80	64.51	210.00	93.40	92.60	

★ Copleland ★★ Carrier ★★★ Bitzer ★★★★ Maneurope
IN.P: Compressor input power
*Data for R1034A is also available by request.

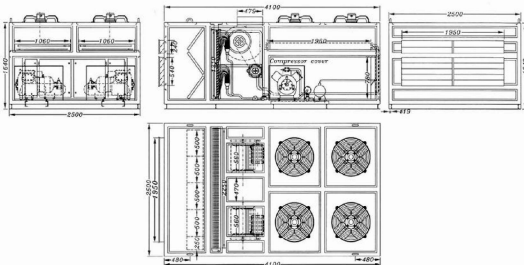
- APC1 Models Dimensions:



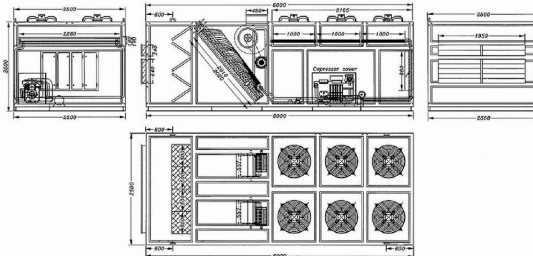
- APC11**20



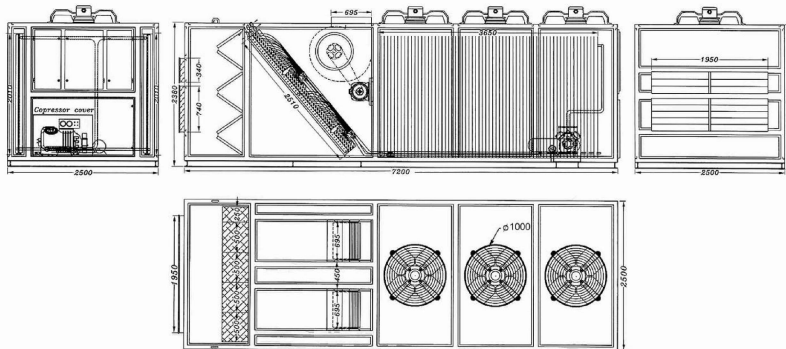
- APC1***25
- APC1***30



- APC1***40

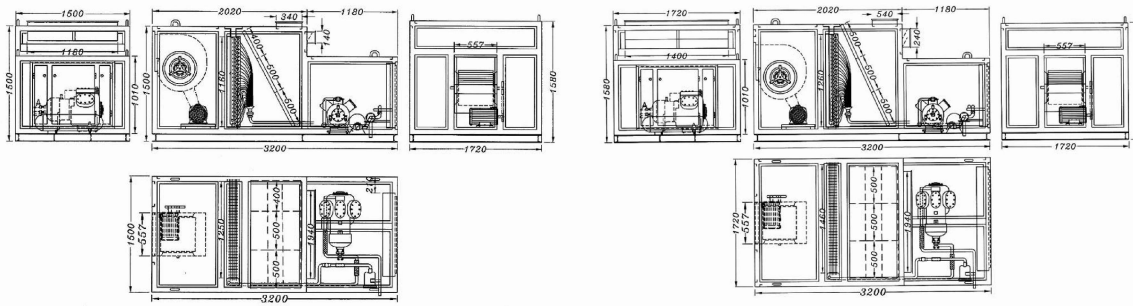


- APC1***50, - APC1***70
- APC1***60



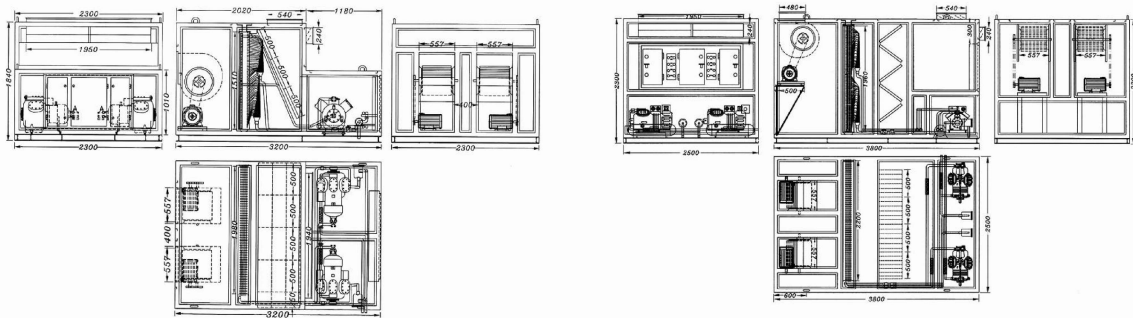
- APC1***80, - APC1***100

- RPC1 Models Dimensions:



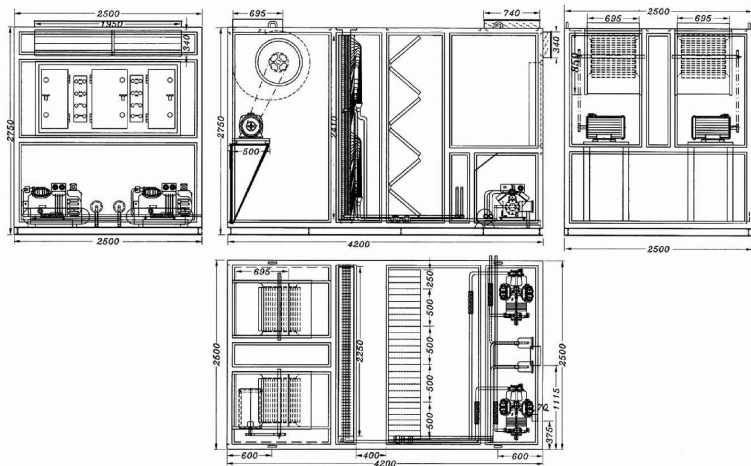
- RPC1**20

- RPC1***25
- RPC1***30



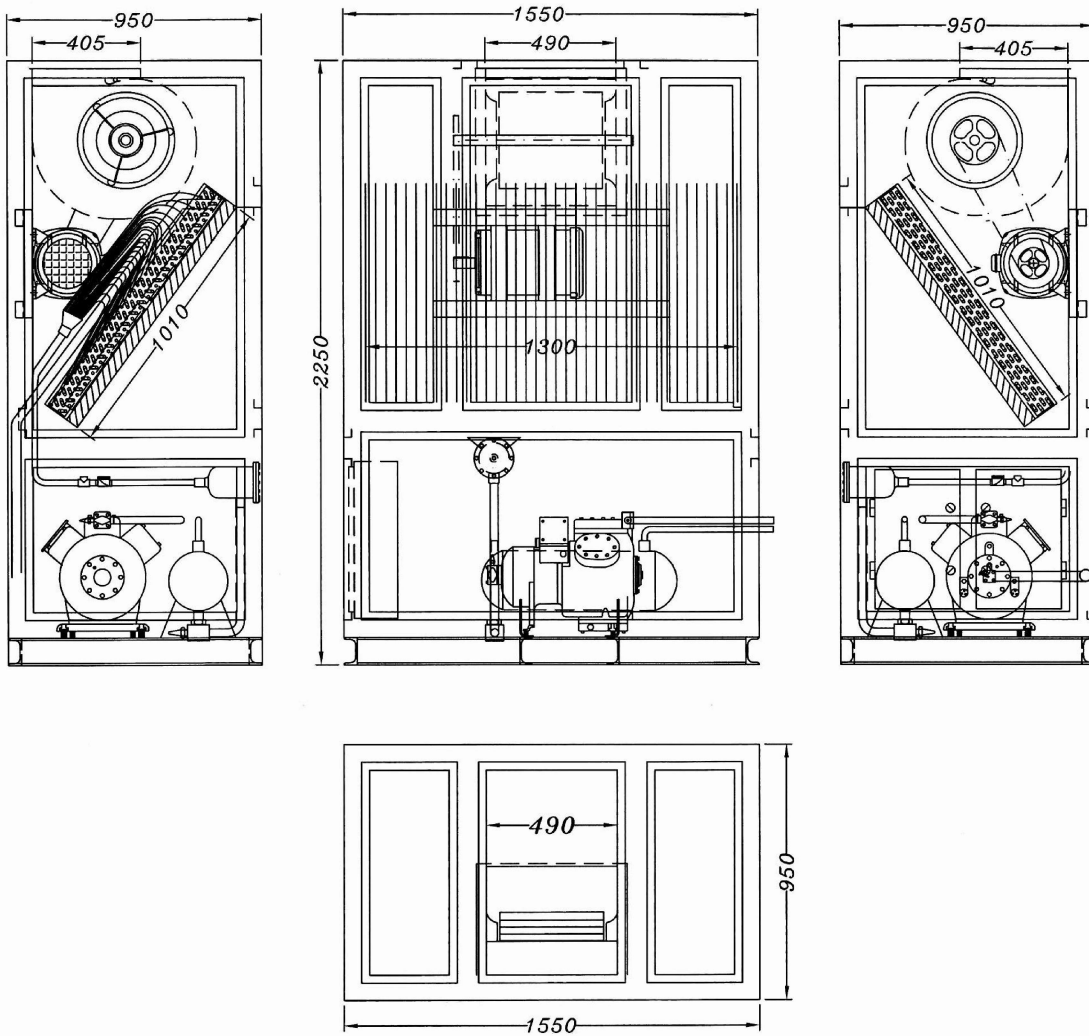
- RPC1***40

- RPC1***50, - RPC1***70
- RPC1***60

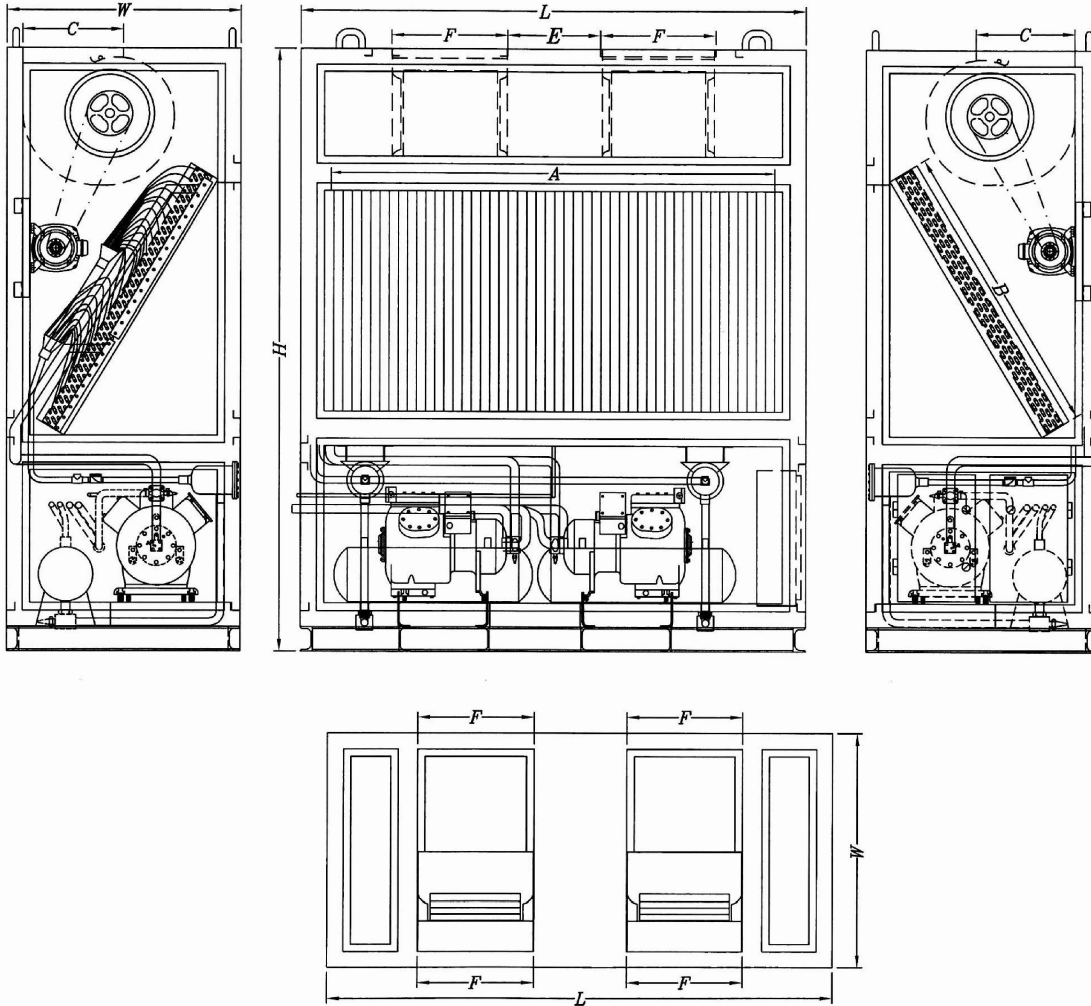


- RPC1***80, - RPC1***100

RPC21S*15 Model Dimensions:

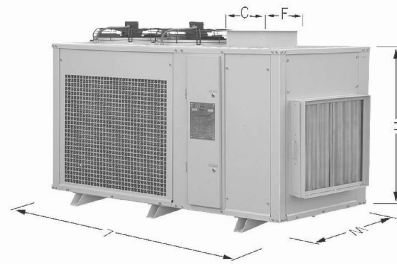


RPC2220, RPC22**25, RPC22**30, RPC22**40 Models Dimensions:**



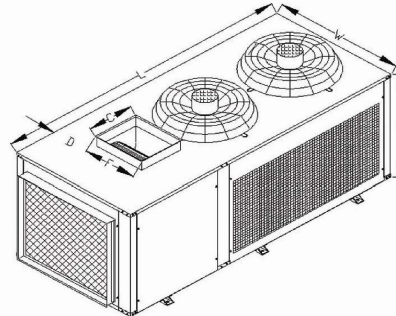
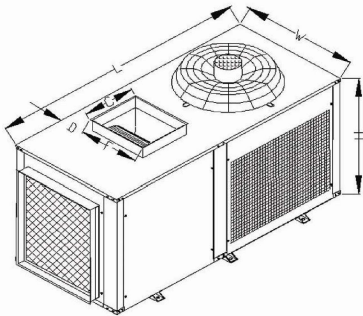
MODEL	L	W	H	A	B	C	E	F
RPC22**20	2030	950	2100	1780	1010	341	340	395
RPC22**25	2060	950	2450	1810	1210	405	360	490
RPC22**30	2100	950	2450	1800	1210	405	400	490
RPC22**40	2250	1000	2500	1850	1210	405	400	490

APC2 models dimensions:



APC21SB4 - APC21H*5 - APC21SB7 - APC21**8
APC21**10 - APC21SB12 - APC21S*15
APC21S*20

APC21SB6 - APC21SB12 - PCA21S*15
APC21S*20



MODEL	L	W	H	C	E	F
APC21SB5	1640	750	750	289	210	331
APC21**5	1640	940	750	289	305	331
APC21SB6	1940	940	1000	341	305	395
APC21SB7	1940	940	1000	341	272	395
APC21**8	1940	940	1000	404	235	471
APC21**10	1940	940	1000	404	235	471
APC21SB12	2460	1240	1000	404	385	471
APC21S*15	2940	1240	1100	404	385	471
APC21S*20	2940	1240	1250	404	385	471